

## DESCRIPTION

Eurocode is happy to offer you our Turbo Muffler Delete for various 1.8T & 2.0T engines. CNC machined to exact specifications, from a single block of aircraft grade aluminum. This turbo muffler delete will increase your boost response, especially during on/off throttle scenarios, while also making your turbo more audible in and outside of the cabin. The factory part is designed to reduce the ambient engine bay noise, but as a result hinders performance. Some individuals may value the reduction in ambient engine noise, but for any enthusiast it isn't worth the trade-off. Our Turbo Muffler Delete, with the included square o-ring, will form a 100% seal between it and the muffler housing, allowing a smooth uninterrupted flow of air.



## APPLICATIONS

### Audi:

- A3/S3 8V - EA888 1.8 TFSI & 2.0 TFSI
- A4 B8/8.5 - EA888 Gen 2&3 2.0 TFSI
- A4 B9 - EA888 Gen 3 2.0 TFSI
- A5 B8/8.5 - EA888 - Gen 2&3 2.0 TFSI
- TT/TTS - EA888 - Gen 3 2.0 TFSI
- A6 C7 - EA888 - Gen 2 2.0 TFSI
- Q5 8R - EA888 - Gen 2&3 2.0 TFSI

### VW:

- Golf MK7 - EA888 Gen - 3 1.8 TSI & 2.0 TSI
- GTI MK7 - EA888 Gen - 3 1.8 TSI & 2.0 TSI
- Golf R MK7 - EA888 Gen - 3 1.8 TSI & 2.0 TSI



## CONTENTS

- (1) - TRUFlo TMD
- (1) - Square Rubber O-Ring

## TOOLS REQUIRED

- Torx 25 bit
- 5mm hex wrench



## STEP ONE - Lift / Hose Removal

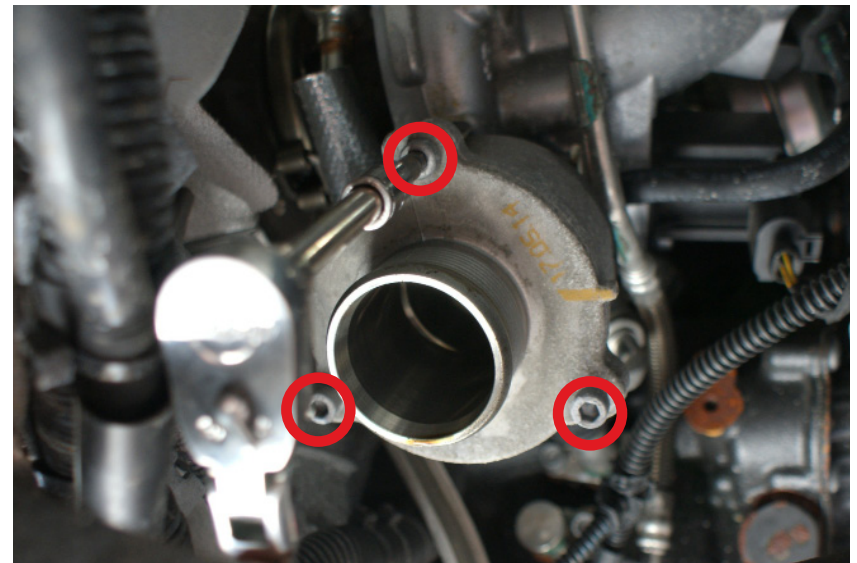
1. Safely raise the vehicle using an automotive lift, or jack using the manufacturer recommended lifting points.

*(Place jack stands under car if using a jack. Never work on a vehicle supported only by a jack.)*

2. Loosen hose clamp with 5mm hex wrench and pull to the side.

## STEP TWO - Removal of stock part

1. Remove three 5mm hex bolts to replace stock part.



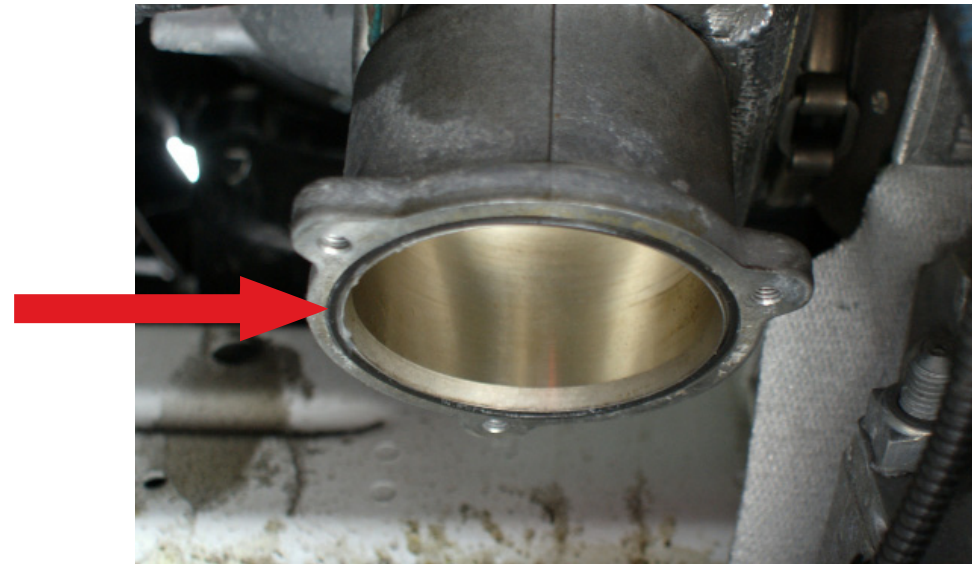
## STEP THREE - Clean Turbo Outlet

1. Use a clean, lint free rag to clean out any excess oil or debris from the turbo outlet.



## STEP FOUR - Replace stock O-Ring

1. With a small amount of grease carefully place stock O-Ring back onto turbo outlet.





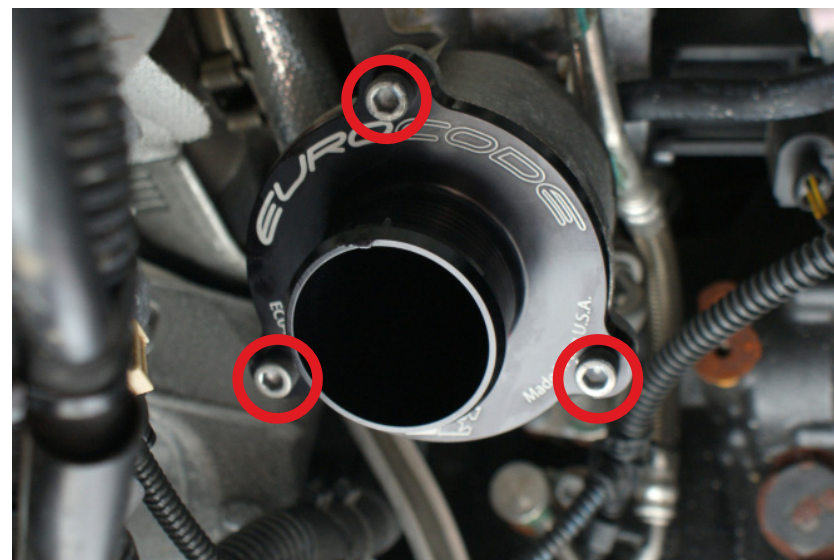
## STEP FIVE - Install Square O-Ring

- I. Place provided square o-ring inside the groove of the TMD.



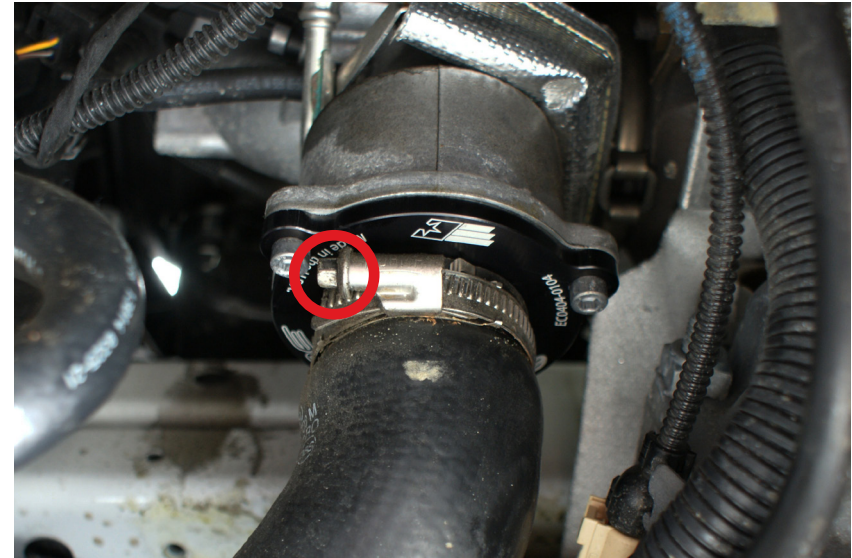
## STEP SIX - Install TruFlo TMD

- I. Place TRUFlo TMD into turbo outlet and tighten the bolts to 9NM



## STEP SEVEN - Conect Turbo Outlet Hose

1. Clean out any excess oil or debris from inside of hose, place it back over the TRUFlo TMD and tighten hose clamp.



## STEP SEVEN - Have Fun!

1. Re-install bellypan and any other parts in reverse order and go out and enjoy your TMD!

## WARRANTY

### LIMITED ONE (1) YEAR WARRANTY

Eurocode Tuning, Inc. (EUROCODE) warrants to the original purchaser that our (PRODUCT) will be free of defects in material and workmanship for a period of one (1) year from the date of purchase.

This Warranty applies only to the original purchaser of the PRODUCT. To obtain any warranty service, you must provide EUROCODE with proof of purchase and date of purchase acceptable to EUROCODE, such as a copy of your purchase receipt. This warranty does not cover the removal or reinstallation of the product. EUROCODE will, at its option, repair, replace or refund the purchase price of a defective component, provided you return the defective component during the warranty period, transportation charges prepaid, to Eurocode Tuning's Service Department or a Factory Authorized Service Center.

Attach your name, address, telephone number, a description of the problem, and a copy of your sales receipt. All returns must be accompanied by a Return Goods Authorization (RGA) number and such number shall be written clearly on the outside of the box. RGA numbers may be obtained by calling EUROCODE at 1-310-294-8108. This warranty does not apply to the (i) metal finish or (ii) if the product/component has been damaged by accident, abuse, misuse, collision, modification, misapplication, improper installation, or improper service. This warranty is void if any EUROCODE serial number has been removed or defaced. Commercial or industrial use or application, or any motorsports use voids the warranty.

THE WARRANTY SET FORTH ABOVE IS THE ONLY WARRANTY. THERE ARE NO OTHER WARRANTIES, EXPRESS OR IMPLIED, INCLUDING BUT NOT LIMITED TO IMPLIED WARRANTIES OF MERCHANTABILITY OR FITNESS FOR A PARTICULAR PURPOSE. ANY IMPLIED WARRANTY WHICH BY LAW MAY NOT BE EXCLUDED IS LIMITED IN DURATION TO ONE (1) YEAR FROM THE DATE OF ORIGINAL RETAIL PURCHASE OF THE PRODUCT.

## LIABILITY

No EUROCODE dealer, agent or employee is authorized to make any modification, extension or addition to this warranty.

EUROCODE SHALL NOT BE LIABLE FOR SPECIAL, INDIRECT, INCIDENTAL OR CONSEQUENTIAL DAMAGES (INCLUDING, BUT NOT LIMITED TO, LOST PROFITS, DOWN TIME OR LOSS OF USE) UNDER ANY LEGAL THEORY, EVEN IF EUROCODE WAS ADVISED OF THE POSSIBILITY OF SUCH DAMAGES.

Some states do not allow the exclusion of implied warranties or the exclusion or limitation of liability for incidental or consequential damages, or limitations on how long an implied warranty lasts, so the above limitation or exclusion may not apply to you. This warranty gives you specific legal rights. You may also have other rights that vary from state to state. EUROCODE reserves the right to change Product/component design without notice. In situations in which EUROCODE has changed a Product/component design, EUROCODE shall have no obligation to upgrade or otherwise modify previously manufactured Products/components.

Warranty inquiries and Products to be returned for warranty service should be sent to:

Eurocode Tuning, Inc.  
Customer Service Department  
1872 Del Amo Blvd Unit A  
Torrance, CA 90501  
1-310-294-8108  
1-310-212-7141 International Fax